

## Surfrider Foundation's Mission



A grassroots environmental organization dedicated to the protection and enjoyment of oceans, waves and beaches through a powerful activist network.

## Good Work of Surfrider Chapters

From  
Beach Cleanups...



To Water Quality  
Testing and  
Campaigns



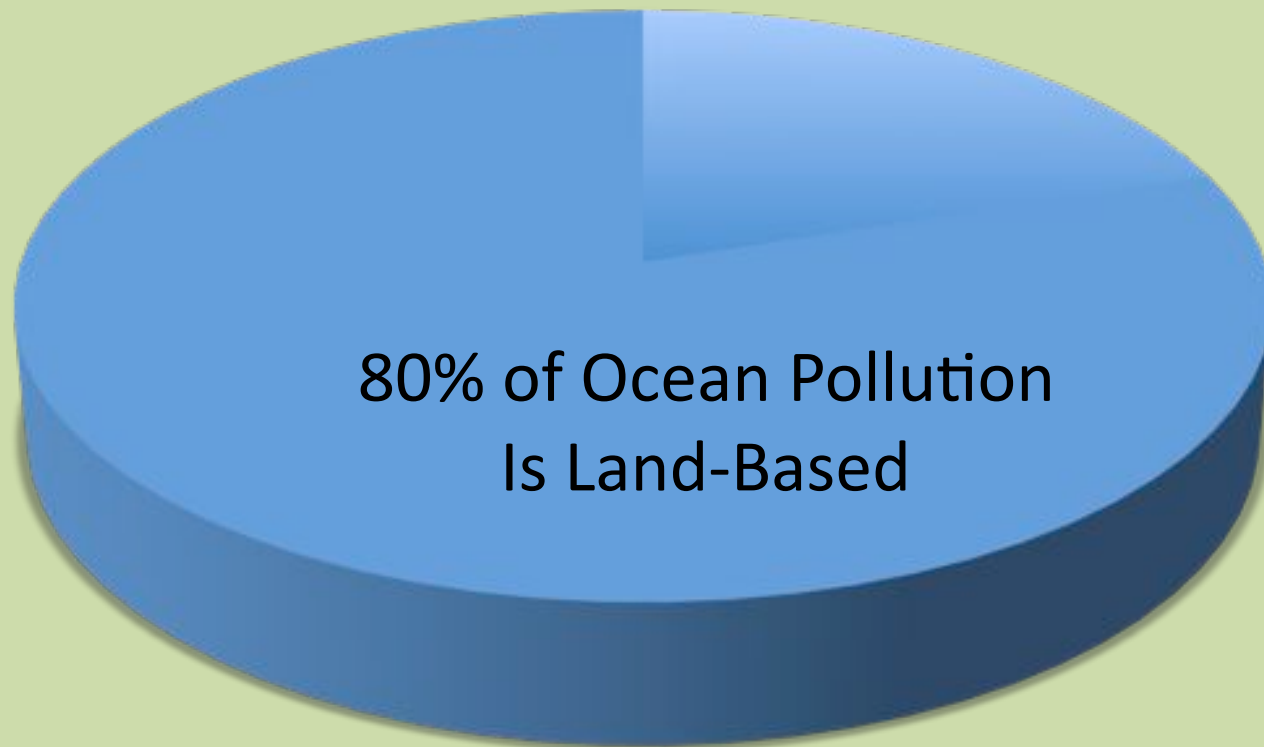
## OFG Takes on Pollution Prevention



Dry Weather



Wet Weather





## Concentrate On The **First Flush**



**Capture or at Least Cleanse**

**The first  $\frac{3}{4}$  – 1 Inch  
of rain after a dry period.**

## First Flush Carries Street Pollution (Seen and Unseen). . .

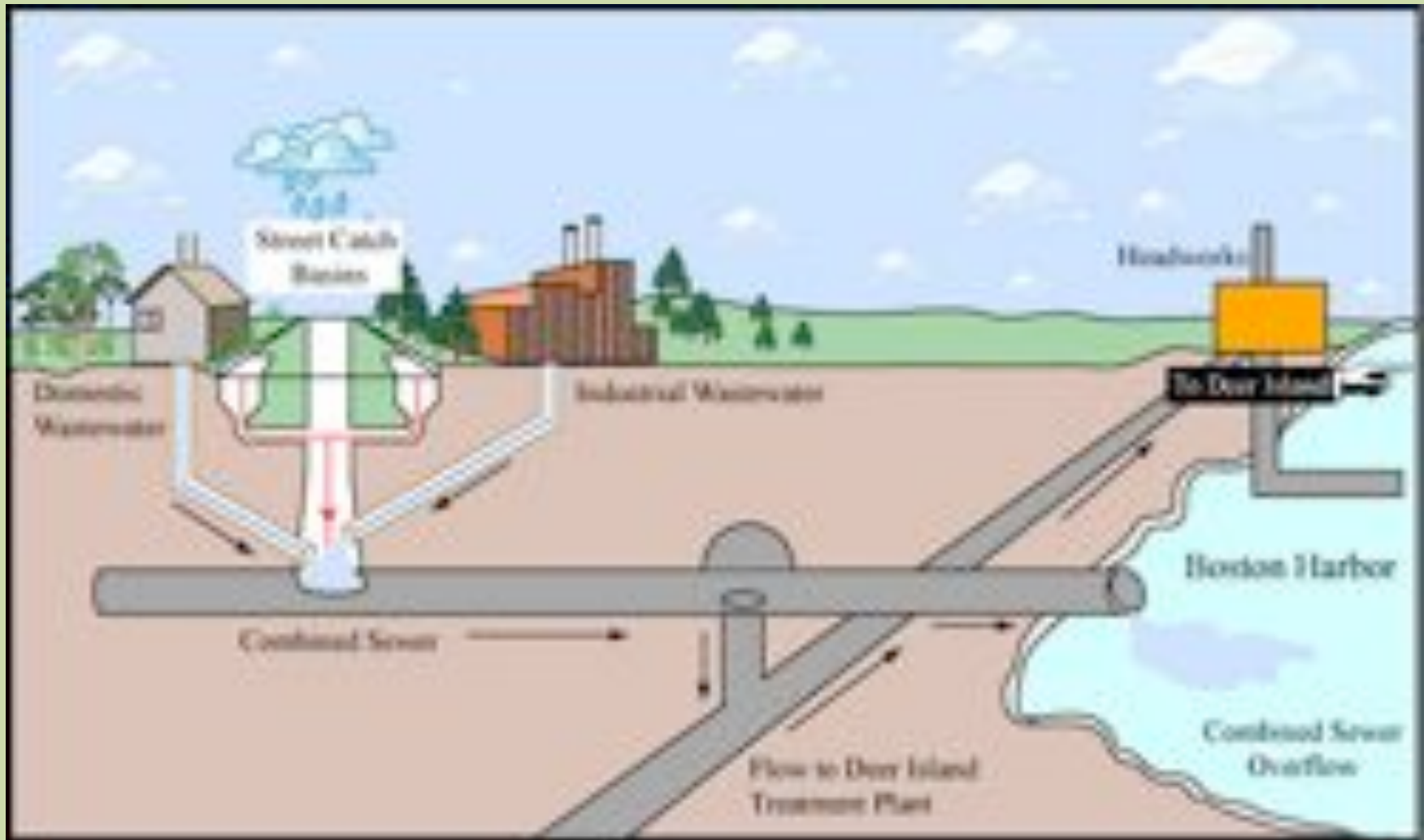


To Storm Drains . . .





## Or Combined Sewer Outflows (CSO): Stormwater + Wastewater in Same Pipes





## Through the Flood Control System . . .



During a storm, billions of gallons of water may run through the storm drain system.

This overwhelms the cleaning system and pollutes our waterways.

Increased runoff also means decreased groundwater recharge.

## To Our Oceans and Beaches . . .



Image courtesy of Heal the Bay



## Killing Life.



Image courtesy of Heal the Bay.

## OFG Builds Awareness About Runoff







Does your region's  
**economy** depend upon  
its clean beaches?

Surfrider Foundation Created The  
Ocean Friendly Gardens Program:



[www.oceanfriendlygardens.org](http://www.oceanfriendlygardens.org)

# Start Thinking of Your Home As **A Mini-Watershed**



**C**onservation

An illustration of a two-story house with a chimney, surrounded by trees and a lawn. The word 'Conservation' is overlaid in a large, bold, blue font with a red 'C'.



**P**ermeability

An illustration of a car parked in a driveway. A person is using a hose to spray water on the car, and another person is standing nearby. The word 'Permeability' is overlaid in a large, bold, blue font with a red 'P'.



**R**etention

An illustration of a lawn mower cutting grass. The word 'Retention' is overlaid in a large, bold, blue font with a red 'R'.

Copyright 2011, G3LA LLC. All Rights Reserved.

Apply C.P.R. To Revive Watersheds and Oceans

# CPR Principles

## **Conservation** of

- Water
- Fertilizers, pesticides and herbicides (most come from petroleum)
- Energy (moving & cleaning water use lots of energy)
- Wildlife habitat
- Air quality reduced use of gas-powered maintenance machinery (air pollutants) and yard waste through native or climate-appropriate plants, spaced with their mature size in mind.

## **Permeability** through

- Healthy, biologically active soil (mulch, compost)
- Hard surfaces that are porous, have gaps in them or direct water to soil

## **Retention** of rainwater by


- Rain chains and rain gardens, storing water in the soil for the dry seasons
- or rain barrels save it to water veggies, preventing it from running off the property.



## Is Rainfall Enough for Plants?

- Average yearly rainfall – examples:
  - New Jersey: 42 inches.
  - Portland: 37 inches.
- 1,000 sq. foot of impermeable space (roof) x 1 inch of rain = creates 600 gallons of water.
  - 42" x 600 gals = 25,000 gallons
- Water that can feed native and climate-appropriate plants, i.e., those adapted to this rainfall pattern.

## OFGs Sponge-Up the Rain

- 
- ① Prevents Pollution and Flooding
  - ② Reduces Supplemental Water Required
  - ③ Recharges Local Water Sources
  - ④ Create habitat and beauty

## OFG Cuts Water, Yard Waste and Maintenance Time

# The Numbers Speak for Themselves

### Traditional Landscape



51,000 Gallons

WATER



130 Pounds

YARD WASTE



80 Hours

MAINTENANCE  
HOURS

### Sustainable Landscape



8,000 Gallons

WATER



25 Pounds

YARD WASTE



15 Hours

MAINTENANCE  
HOURS

Consumption for one year based on 2004-2006 data.

# Copying Nature

Like 3 R's (Strategy) – Reduce, Reuse, Recycle (& Recharge)

Remember The 3 S's For Water (Technique):

- Slow it – rocks at base of downspout; rain chains; mulch or gravel.
- Spread it – distributed to multiple areas.
- Sink it – recharge groundwater.

Streams Don't Flow in a Straight Line – They Curve & Have Low Spots



## Program Objectives and Strategy: Build Chapter and Program Capacity

- **Build on Surfrider programs** - Blue Water Task Force, Beach Clean-Ups, Special Places.
- **Prepare volunteers and land stewards** – owners and renters, through education, training and hands-on assistance. Apply CPR at home, work and public spaces.
- **Spark change** - through visible, community-building projects. Ask those helped to join an OFG Committee and become “ambassadors” in their neighborhood. So we can scale-up OFG.
- **Collaborate:**
  - government agencies so they incorporate OFG principles and practices into policies, programs and regulations.
  - local landscape professionals to help lead OFG Program components and incorporate OFG into their own projects.

## Additional Benefits

Helps to find new members – reach new demographics, e.g., gardeners, birders.

Common sense approach

See immediate change

# OFG Program Components (Template): We Help Educate, Train, Assist and Connect People



Basics Class



Hands-On Workshops (HOWs)

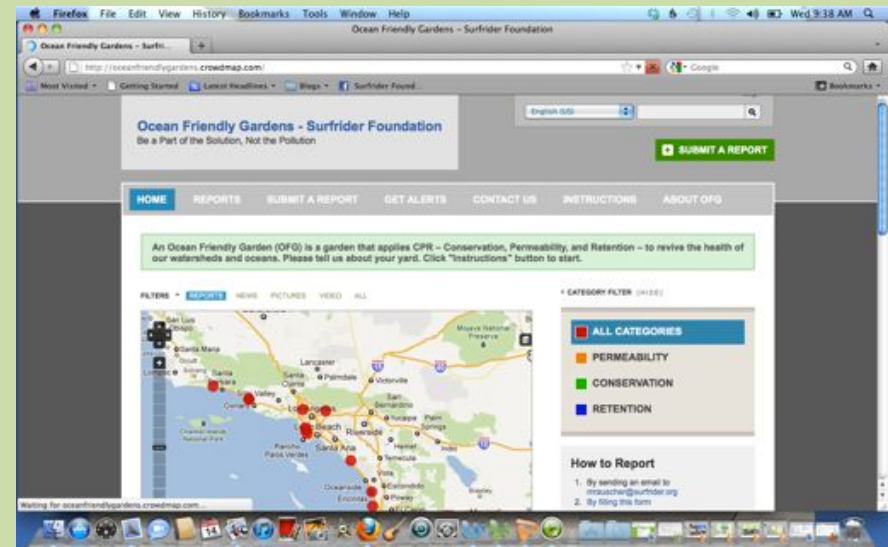
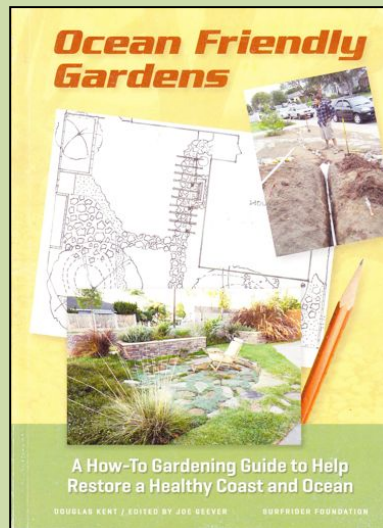


Garden Assistance Program (GAP)



Lawn Patrol: Neighborhood Walk

# OFG Sign, Book, Blog and Online Tracking





# OFG Activist Toolkit

Firefox File Edit View History Bookmarks Tools Window Help

Ocean Friendly Gardens Activist Toolkit - Beachapedia

http://www.beachapedia.org/Ocean\_Friendly\_Gardens\_Manual

Most Visited Getting Started Latest Headlines Blogs Surfrider Found...

## Ocean Friendly Gardens Activist Toolkit

Chapters Appendices

**Contents [hide]**

- 1 Table of Contents
- 1.1 Appendices



### Table of Contents

**Note:** You can also navigate the manual using the navigation bar at the top of the page

- CHAPTER 1: INTRODUCTION
- CHAPTER 2: OBJECTIVES
- CHAPTER 3: WORKING WITH PROFESSIONALS
- CHAPTER 4: LEVELS OF PROGRAMMING
- CHAPTER 5: INFORMATIONAL PROGRAM
- CHAPTER 6: LAWN PATROL PROGRAM
- CHAPTER 7: SERIES PROGRAM

Navigation

Main page

Browse articles

Recent changes

Random page

Help

Other languages

Deutsch

Español

Français

فارسی

Հայերեն

Italiano

Nederlands

Português

Svenska

العربية

Share This Page

Like

Tweet 0

Share

Firefox

## OFG Lawn Patrol = Neighborhood Walks:



Outdoor Education \* Training The Eye \* Spotting OFGs for Signs \* Help Those Almost There



## We Look For Gardens That Are Ocean Friendly





And Educate About Gardens That Are Not



# We Offer Assistance To Make Your Garden Ocean Friendly

OCEAN FRIENDLY GARDENS PROGRAM FROM THE SURFRIDER FOUNDATION

## LAWN PATROL STOPPED BY, AND WE LOVE YOUR GARDEN!



DATE: \_\_\_\_\_  
TIME: \_\_\_\_\_

We toured your neighborhood, and noticed your garden has many features of an Ocean Friendly Garden which utilizes CPR:

☐ Conservation  
☐ Permeability  
☐ Retention

Comments: \_\_\_\_\_  
\_\_\_\_\_  
\_\_\_\_\_  
\_\_\_\_\_

Attend a Class or Workshop and get involved!



## Hands-On Workshop: Permeable Driveway





## OFG Series: Ventura, CA



800 sq. ft. lawn retrofit

Lawn used 21,000 gallons of water/  
year

Dry and wet weather runoff



OFG Basics Class



Hands-On Workshop:  
Site Evaluation





And GAP



- ✓ City of Ventura Public Works Dept.
- ✓ Surfrider Ventura Chapter
- ✓ Each Participant Paid \$10 For Series





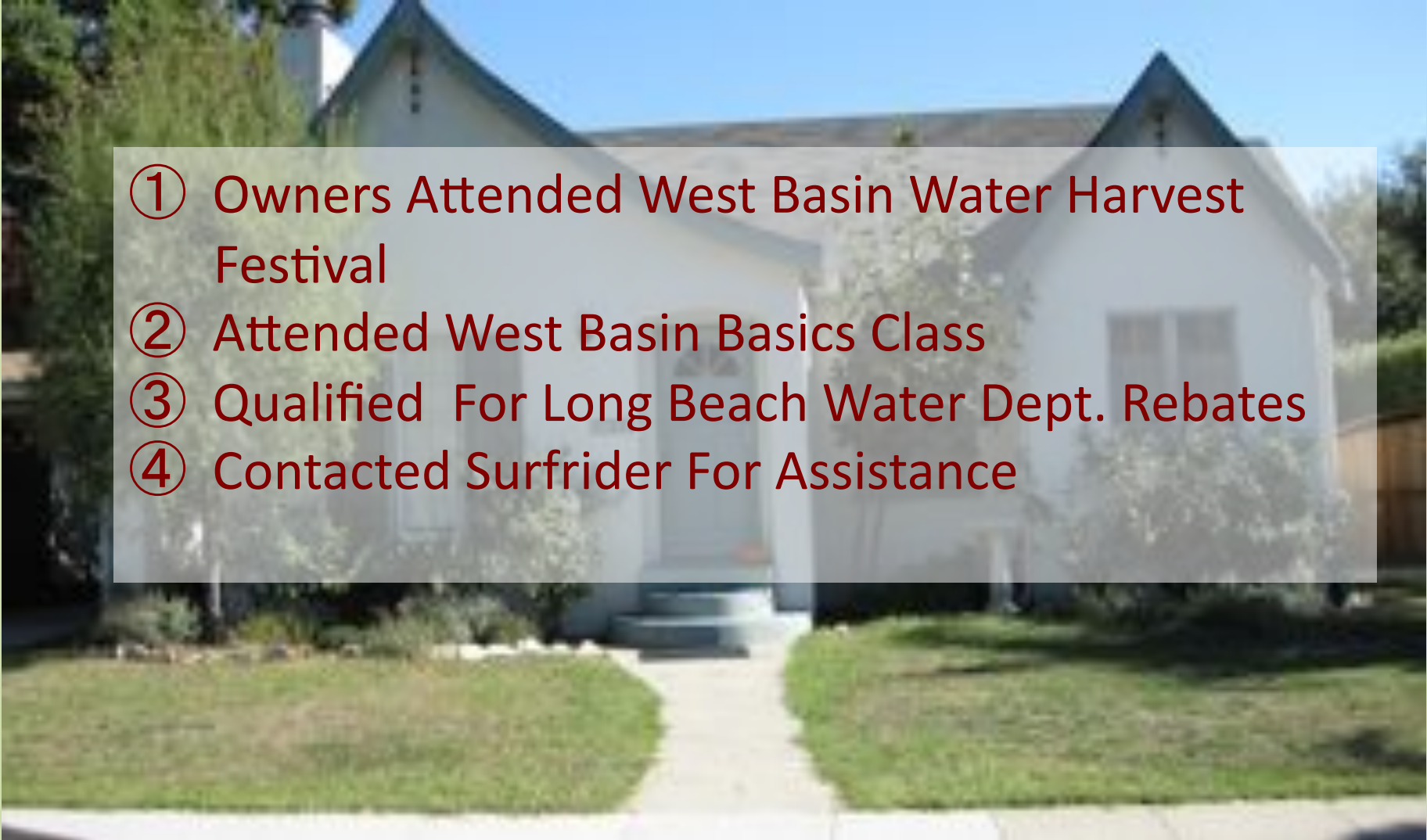
Reduced Water Use by 90%  
Zero Dry-Weather Runoff  
Zero Wet-Weather Runoff  
Build Habitat

## No Irrigation Needed Through August





## Workshop/Workday Blend: Long Beach, CA

- 
- ① Owners Attended West Basin Water Harvest Festival
  - ② Attended West Basin Basics Class
  - ③ Qualified For Long Beach Water Dept. Rebates
  - ④ Contacted Surfrider For Assistance

Private Residence





## **Workday Agreement Between GAP Host & Surfrider:**

In Appendix D – Activist Toolkit  
(GAP Questionnaire there, too)

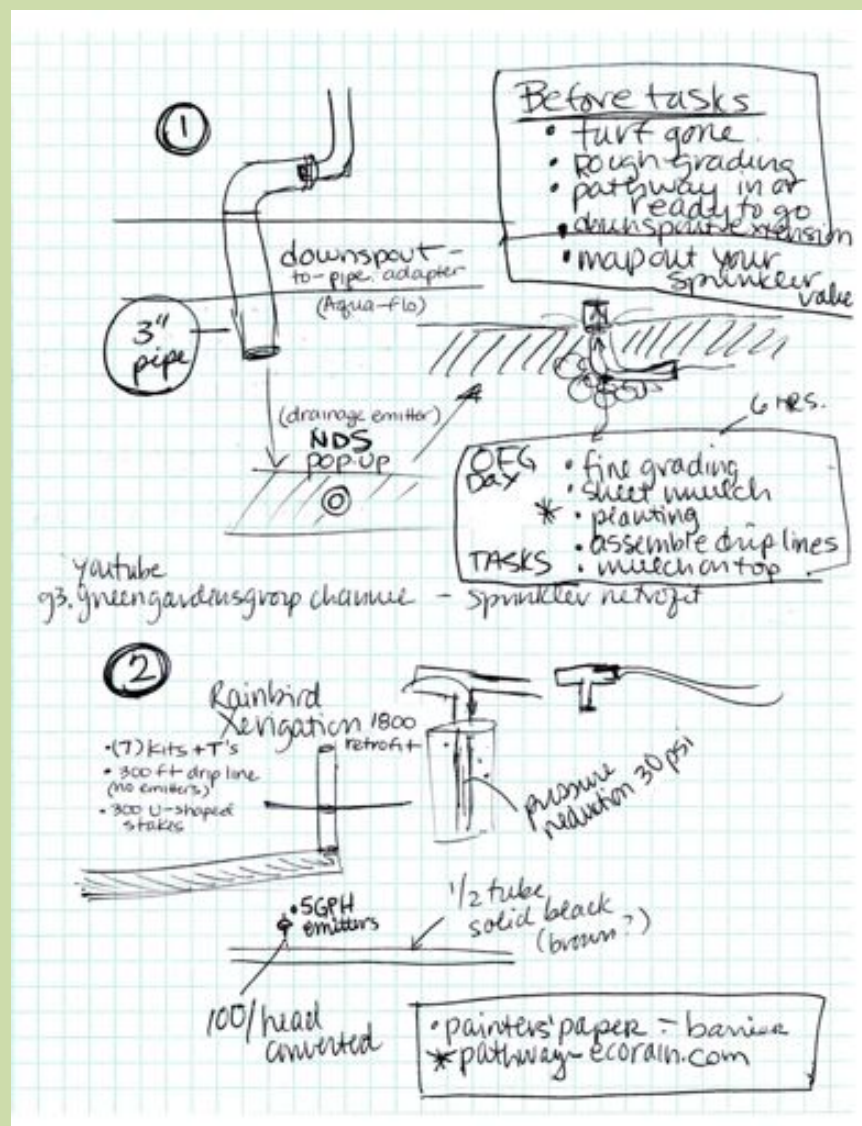
- ✓ Create An OFG Design
- ✓ Gather All Materials
- ✓ Invite Family, (2) Friends, & (3) Neighbors
- ✓ Provide Food & Drink
- ✓ Pay For Professional Workday Coordination
- ✓ Participate & Learn
- ✓ Join Surfrider
- ✓ Pay It Forward: Lead Lawn Patrol & Help With Events



Site Meeting: Owner, SF-LB, G3



## Homeowners Paid G3 To Lead





- ✓ Long Beach Water Dept. Turf Rebate
- ✓ Surfrider Long Beach Chapter
- ✓ Each Participant Paid \$10 Fee
- ✓ Homeowner Paid Balance of Professional Fees





Reduced Water Use by 90%  
Zero Dry-Weather Runoff  
Zero Wet-Weather Runoff  
Build Habitat





## Other Ways to Direct Rainwater

Figure 10: Using a rock-lined trench to convey water across a walkway (Photo: Portland Bureau of Environmental Services (BES))



Figure 11: Trench drain through a sidewalk at a building in Portland. (Photo: Derek Gidycz, ORE)

## OFG Series: La Jolla, CA



800 sq. ft. lawn retrofit

Lawn used 18,000 gallons of water/year

Dry and wet weather runoff at Local Surf Spot

Private Residence



And GAP







Share good food and meet cool people



## Homeowner Agrees To Spread The Word

Reduced Water Use by 80%  
Zero Dry-Weather Runoff  
Zero Wet-Weather Runoff  
Build Habitat





## Seek Out Local Resources

Mulch –tree trimmers

Compost – City, homemade

...Or Brew Compost Tea

## Series + Workday: OFG Public Demonstration Project

**1,300 Sq. Ft. Lawn Behind the Lawndale Library**



- ✓ Best Buy Grant
- ✓ West Basin & MWD ECP Grant Funds
- ✓ Professional And Volunteer Labor



## Partnerships are Key



West Basin MWD, Metropolitan Water District of  
Southern California, Surfrider, G3, Local Businesses,  
Teen Friends of the Library







HOWs Can Cover:

1. Site Evaluations
2. Work Days
3. Maintenance

The Garden Was Built  
With Paid Professionals  
And Volunteers





The Lawndale OFG Became Reality





**Reduced Water Use by 80%**  
**Zero Dry-Weather Runoff**  
**Zero Wet-Weather Runoff**



## San Francisco Chapter – “Plant Don’t Pave”

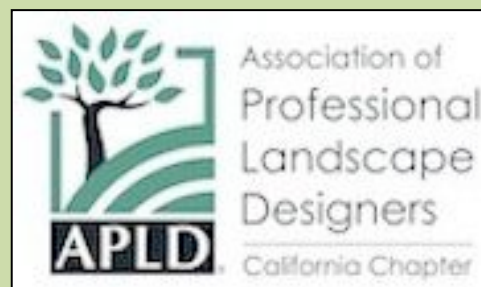


<http://www.plantsf.org/FeaturedProjects.html>

# OFG Blossoms Through An Collaborative Approach



- ① Bringing OFG to Agencies, Professionals, Non-Profits
- ② Professional Leadership & Support to Hands-on Activities
- ③ Multiple Funding Partners
- ④ Public Demonstration Gardens
- ⑤ Multiple benefits: water quality, water supply, flood management, etc.





# Ecosystem-based Management

## Integrated Water Management



## Wastewater Reuse



## Green Streets



## Ocean Friendly Gardens



in your  
watershed

in your city

in your  
neighborhood

at home

public  
policy

individual  
action

## Low Impact Development (LID) – Commercial Parking Lot

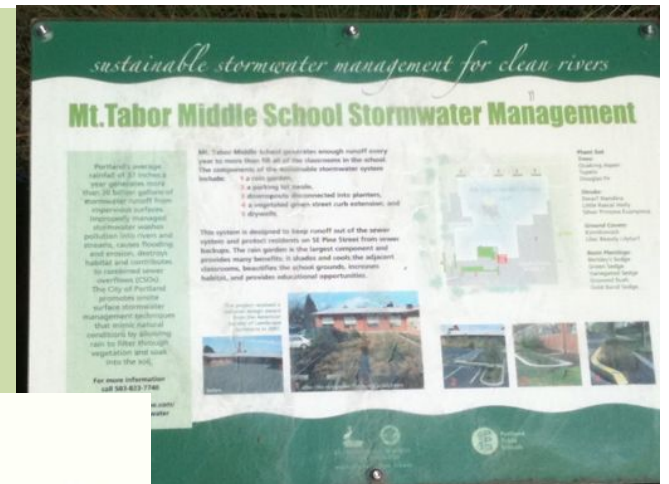




## Green Streets – Curb Cut Leading to Swale in Parking Strip (And Permeable Concrete and Asphalt Street)



...And At A School





Partnership Example: Soil & Water Conservation Districts (SWCD)  
(EMSWCD Offers Classes, Workshops, Grants)



# Action Plan

- Form an OFG Committee
- Evaluate Chapter Capacity and Interest
  - See what programs & resources already exist (Chapter 5/OFG Activist Toolkit)
  - Reach out to professionals, agencies, etc.
- Develop a Strategic Plan
  - Sample one: Chapter 9/OFG Activist Toolkit
  - Neighborhood walk, workday, etc.



# OFG Chapter Volunteer Jobs

Coordinating parts of events –  
outreach, admin

Leading activities – walks

Educating – tabling, talks

Policy change – LID ordinance

*(Similar to other Programs and  
Campaigns)*



## Paul's Role

Support Chapters and Field Staff:

- Resources – website, blog, forum
- Expertise – talk, assist

Regular updates – email, phone (like RAP)

[pherzog@surfrider.org](mailto:pherzog@surfrider.org)

310-439-2500